

# Tobermory High School

## Standard Grade Biology

### Animal Survival

### Reproduction

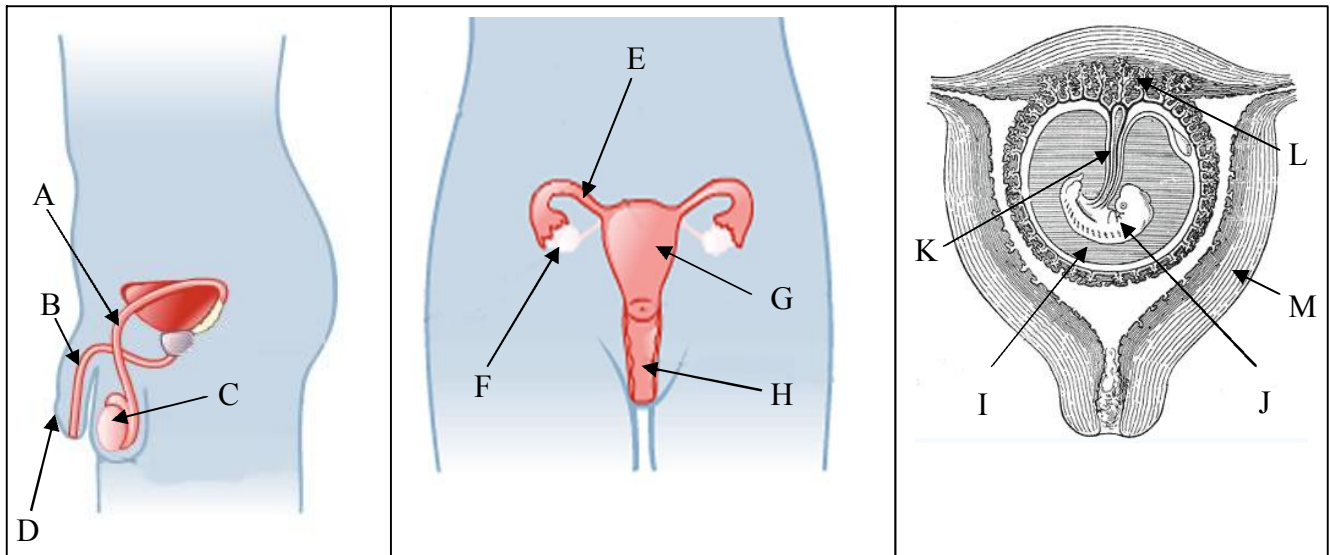
- Name 2 main features of (a) a sperm, and (b) an egg. (2)
- Give three reasons why internal fertilisation is used by land living animals. (3)
- Describe the structure and function of the placenta. (3)
- Some animals show 'parental care' while others don't. What is parental care and give two examples of animals which show it and two example of those who don't. (3)
- Write down the meaning of the following. (6)
 

(a) fertilisation	(d) amnion
(b) implantation	(e) embryo
(c) courtship	(f) umbilical cord.
- Identify each of the letters in the following diagrams.

#### Male reproductive organs

#### Female reproductive organs

#### Developing embryo



(13)

- The following table shows the growth rate of a young trout.

Age (years)	1	2	3	4	5	6	7	8
Length (cm)	6	17	23	31	33	37	40	40

Using this data, draw a line graph.

(5)

Total = 35